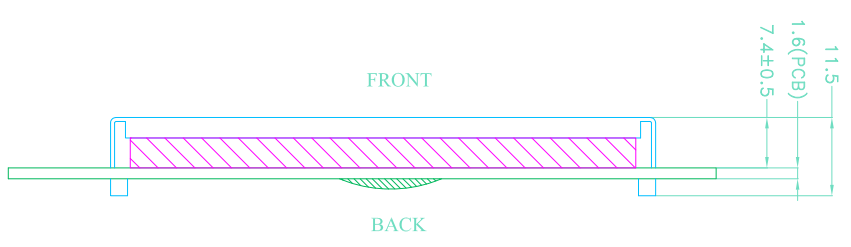
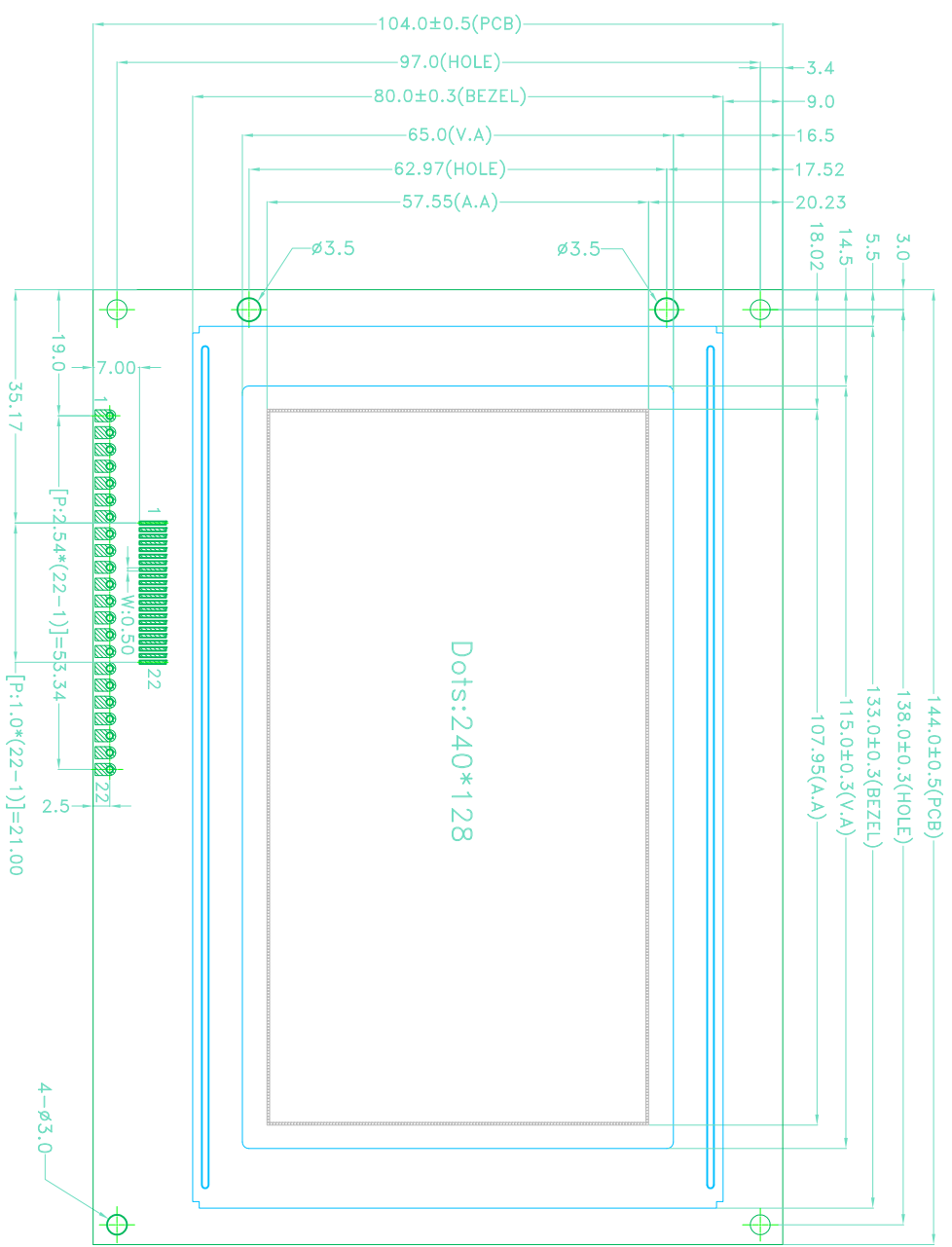


VERSION	CHANGE CONTENT	DATE
V01	FIRST ISSUE	2015.06.29

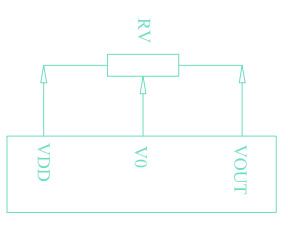
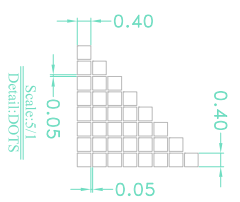


PCB ASSIGNMENT:

1	FG
2	GND
3	VDD
4	V0
5	WR
6	RD
7	CE
8	A0
9	RES
10	DB0
11	DB1
12	DB2
13	DB3
14	DB4
15	DB5
16	DB6
17	DB7
18	NC
19	VOUT
20	BLA
21	BLK
22	NC

**SPECIFICATIONS**

1. DISPLAY TYPE: STN BLUE / TRANSMISSIVE / NEGATIVE STN X-G / TRANSPARENT / POSITIVE
2. DISPLAY RESOLUTION: 240\*128
3. LCD DRIVING VOLTAGE: VOUT: -14.0V V0: -12.4V
4. LOGIC VOLTAGE: 5.0 V
5. VIEWING DIRECTION: 6 O'CLOCK
6. OPERATING TEMP: 0°C -- +80°C
7. STORAGE TEMP: -10°C -- +60°C
8. LCD CONTROLLER/DRIVE: RA8835AP3N(or Compatible)
9. DRIVE MODE: 1/128 DUTY, 1/12 BIAS
10. BACKLIGHT: WHITE or YELLOW-GREEN
11. REMARK:



**DESCRIPTION:**

SCALE: 1:1	ThingWell Electronics	
SHEET: 1 OF 1	LCM NUMBER	
UNIT: mm	DRAWING VERSION	V01
PROJECTION	W240128A1	
APP:	CHK:	DWN:
DATE:	DATE:	DATE:

MECHANICAL TOLERANCE: X±0.3, Y±0.2