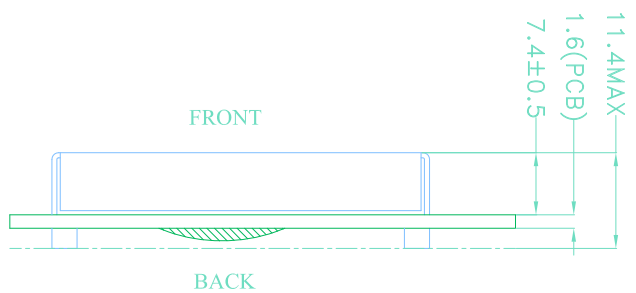
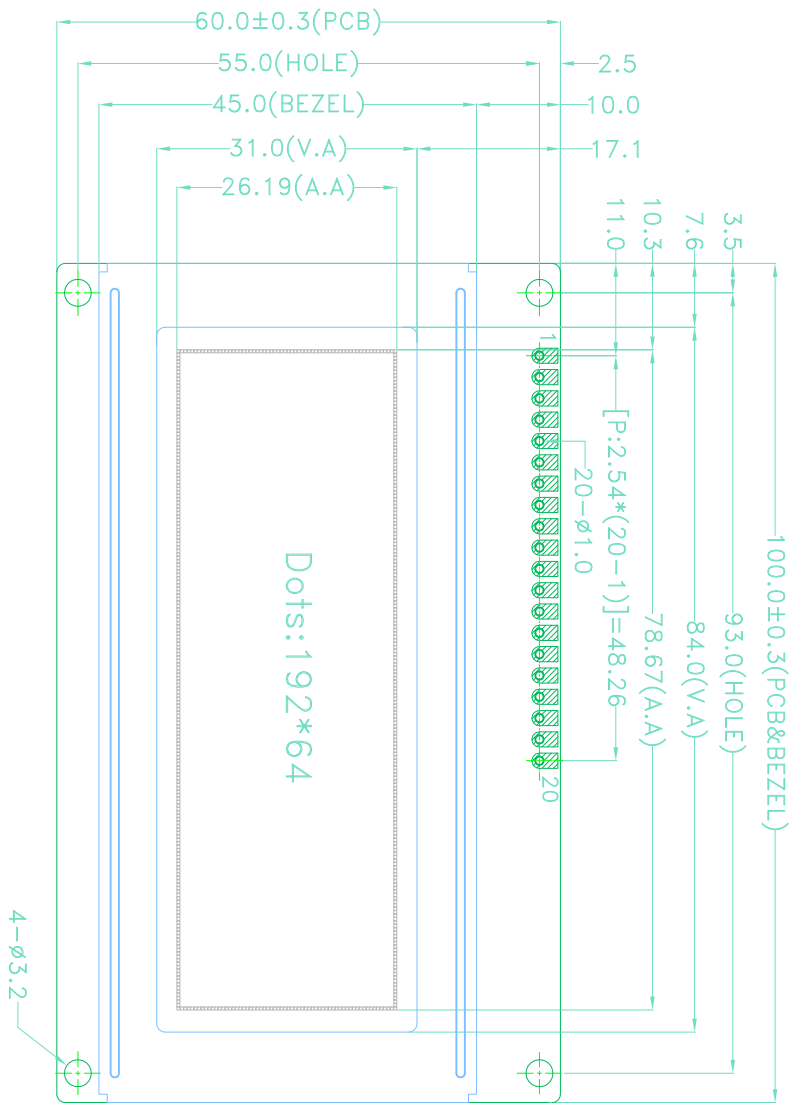
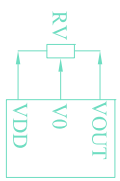


VERSION	CHANGE CONTENT	DATE
V01	FIRST ISSUE	2015.07.10



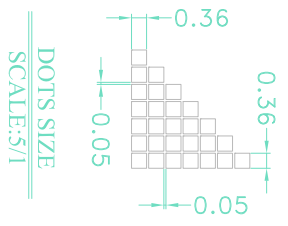
PCB ASSIGNMENT:

1	DB7	11	RS
2	DB6	12	V0
3	DB5	13	VDD
4	DB4	14	VSS
5	DB3	15	CS2
6	DB2	16	CS1
7	DB1	17	VOUT
8	DB0	18	/RST
9	E	19	BLA
10	R/W	20	BLK



**SPECIFICATIONS**

1. DISPLAY TYPE:STN Y/G/STN BLUE /F/STN Positive/Negative
2. DISPLAY RESOLUTION:192\*64
3. LCD DRIVING VOLTAGE:7.5V
4. LOGIC VOLTAGE:5.0V
5. VIEWING DIRECTION:6 O'CLOCK
6. OPERATING TEMP:0°C -- +50°C
7. STORAGE TEMP:-10°C -- +60°C
8. LCD CONTROLLER / DRIVE:SBN0064G, SBN6400G (Or Compatible)
9. DRIVE MODE:1/64 DUTY, 1/9 BIAS
10. BACKLIGHT:SIDE LED BACKLIGHT
11. REMARK: ALL RAW MATERIALS ARE ROHS COMPLIANT



DESCRIPTION:		ThingWell Electronics	
SCALE: 1:1			
SHEET: 1 OF 1			
UNIT: mm	PROJECTION	LCM NUMBER	W19264B
APP:		DRAWING VERSION	V01
DATE:		CHK:	DWN:
		DATE:	DATE: